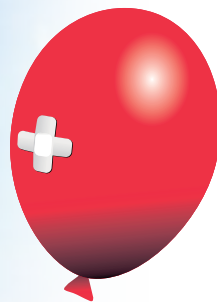




Birmingham
Children's Hospital
Charities

Annual Report **2009-10**



Birmingham
Children's Hospital
Charities

The Trustees' Mission

"To make a real difference to the children at Birmingham Children's Hospital, their families and the staff who treat them by providing additional facilities, equipment and research and by creating a caring environment for all who use the Hospital."

Message from the Chairman

Welcome to the 2009-10 Annual Report of Birmingham Children's Hospital Charities. I am proud to chair a charity that is able to raise significant sums each year which it uses to make a real difference to the lives of young patients and their families who find they need the services of Birmingham Children's Hospital.

Total income in 2009-10 again topped £3 million, thanks entirely to the generosity of our supporters. By making a contribution from other reserves we were able to spend £3.3 million during the year supporting sick children at Birmingham Children's Hospital, with a further £1 million allocated to secure future grant making by the BCH Charities Research Foundation.

You will find some examples of the many ways charitable donations make a difference elsewhere in this report, but the highlight of the year was seeing the new Kidney Unit open and young patients being treated in a vastly improved environment. With the continued support of our donors it is our aim that any of the one million children in the region who may need to come to Birmingham Children's Hospital will be able to experience their care in similar surroundings.

I would like to thank my fellow Trustees for their hard work and commitment during the year. In particular, Sue Jay as Vice Chairman and chairman of the Fundraising Committee has been a great support, and I am grateful to Hugh Reynolds for taking over as chairman of the Investment and Finance Committee. We are a small group of trustees, and Jill Mann, David Proops and Katie Silvester have each provided valuable advice and support.

Finally I must thank the staff and volunteers who ensure that the Charity is able to achieve its plans, and the management of Birmingham Children's Hospital NHS Foundation Trust who work with us to identify the areas of greatest need.

I hope you enjoy reading about what we do and that you will consider supporting us in the future.

John Russell

John Russell
Chairman of Trustees

Charitable Donations

- Making the Best Better

Birmingham Children's Hospital is a special place for children and families from all across the UK who come here for the specialist treatment they could not receive elsewhere. Established in 1852 with just 16 beds all dedicated to children, the Hospital has continued to be one of the country's leading children's hospitals, now offering treatment to more children with a larger range of health problems than any other hospital in the UK.

Whilst the care and treatment of patients is provided from NHS resources by an amazing team of doctors, nurses and other health professionals, charitable donations have always allowed us to do so much more to make a difference to sick children, by providing new equipment, funding research and training, and improving the Hospital's surroundings.

Donations and legacies fund grants awarded in accordance with charity law to BCH NHS Foundation Trust, which operates the Hospital and uses them to deliver patient benefits. In addition research grants are made to the University of Birmingham and other research partners.

In making these grants the Trustees take note of the wishes of patients and staff by directing funds towards areas they identify as most in need, although Trustees retain their independence to act in the best long term interests of present and future patients.

Our key aim is to improve the experiences of the patients of Birmingham Children's Hospital for the public benefit. By working with the Hospital we assist children from all walks of life, regardless of their background or personal circumstances.

New Kidney Unit made possible by Charity Appeal

December 2009 saw the first patients admitted to the new Kidney Unit at Birmingham Children's Hospital thanks to the extraordinary efforts of donors and supporters of the BBC WM Kidney Kids Appeal.

The Hospital's Kidney Unit treats about 1,500 young patients every year, many of whom will be under its care throughout their childhood. The new facilities include real daylight, bright, spacious surroundings and a family room where patients can sit with their parents, and other visitors.

Children were asked what they liked about the new Unit:

“Grandad stays longer when he visits because there is more room and a better chair; he’s got funny legs you know!”

“You can have your tea with mommy and daddy at the table just like at home.”

“Having a coloured area on the floor around your bed is like having your own room - if someone steps over the line, they are trespassing!”

**“You get day and night on this ward.
On the old ward it was night all the time!”**

The Trustees would like to pass on their thanks to everyone who supported the Appeal and also to the Trustees of the British Kidney Patients Association which made its own donation of £1M to the Hospital to improve the lives of these young patients.

Developing New Treatments for Children

BCH Charities continued to show its support for quality research into childhood illnesses and their treatments by allocating an additional £1M for the BCH Charities Research Foundation.

The Research Foundation aims to provide the initial funding for young researchers or new areas of study in order to provide the experience and data necessary to secure grants from other funding sources.

Projects are also funded that seek to apply laboratory experience to the bedside in the form of new treatments for children.

In 2009-10 six projects were funded at a total cost of £325K. The total spent by the Charity on research was £668K in the year (£571K last year).

Projects funded included a study to find better ways of characterising eye cancers so that where possible, treatments could be selected that are less likely to lead to a loss of the eye. Another study will look in detail at some of the side effects of a type of steroid treatment and will try to establish which of two standard methods of weaning children off their steroid treatment provides the best route to recovery of the body's natural steroid function.

Cycling to Improve Well-Being

A young person's experience of a mental illness can often impact on self confidence and esteem, leaving the person feeling lethargic, flat and isolated with a subsequent impact on physical health. In addition some of the medicines used with such children can lead to weight gain. The links between physical and mental health are well established and quite apart from the physical health benefits of exercise, improved mood, motivation and general feelings of wellness are also seen.

BCH Charities therefore awarded a grant of £11,500 to provide twelve cycles and helmets and a cycle trailer so that young patients can easily be taken to suitable local venues for supervised, safe cycling.

Donations and Income 2009-10

Donations from Individuals £141K (08/09: £349K)

Ranging in size from a just few pence to thousands of pounds, we are always amazed by the generosity of individuals who support our work.

Investment Income £197K (08/09: £361K)

Whilst donations are waiting to be spent they are carefully invested to generate extra income.

External Organisations £384K (08/09: £222K)

Grants from charities and similar organisations allow the Trustees to fund particular projects or pieces of equipment.

Corporate Donations £467K (08/09: £540K)

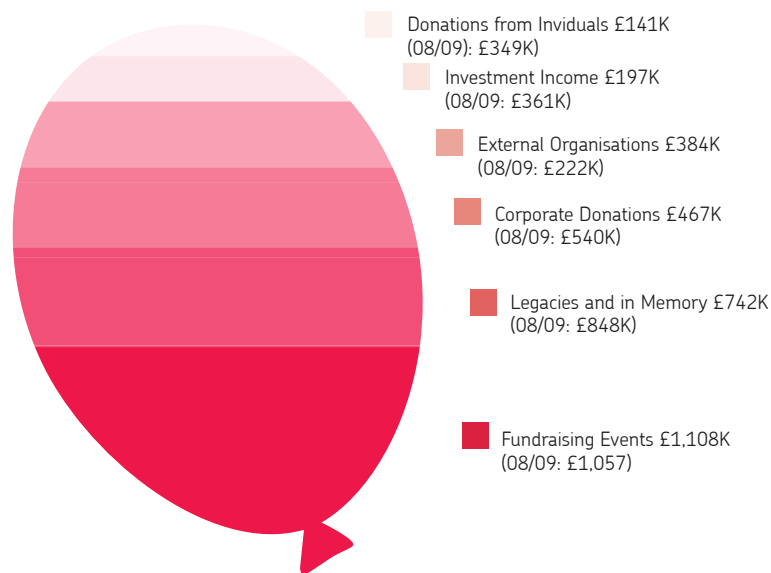
Support from local and national businesses, and their employees, makes a real contribution to Birmingham Children's Hospital each year.

Legacies and In Memory £742K (08/09: £848K)

A gift in a will or a collection in memory of a loved one is a valued way of donating to charity. A gift to Birmingham Children's Hospital really is an investment in the future.

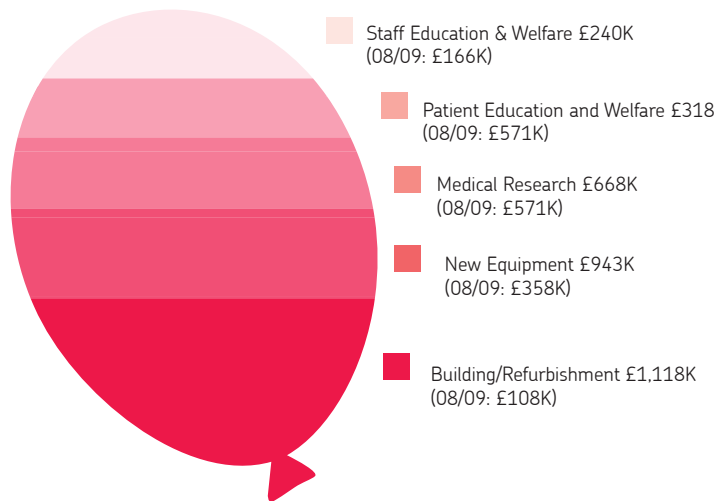
Fundraising Events £1,108K (08/09: £1,057K)

By supporting an existing event or organising one of their own, thousands of people have enjoyed themselves whilst raising money for Birmingham Children's Hospital.



Charitable Grants return to their previous levels

Trustees were pleased to support Birmingham Children's Hospital by authorising new charitable grants totalling £3.3M in the year, more than double the amount available in 2008-09, and back to the levels of support provided in previous years. Included in this figure was over £1.3M spent during the year on building and equipping the new Kidney Unit. This level of investment in improving the experiences of children at the Hospital is only possible because of the huge generosity shown by our fundraising supporters, and we hope to continue and increase our support in future years with their help.



Trustees recognise that many donors have a preference for the part of the Hospital they wish to support and they have established a number of Designated Funds to receive those donations. Spending decisions are then delegated to Fund Advisors who have particular knowledge of the different parts of the Hospital and what is needed to make a difference there.

Research is an important activity supported by the Trustees and donations for research are held in special Designated Funds for that purpose. Applications for funding are subject to internal and external peer review and the quality of the project is assessed by an expert committee. Only the best projects receive funding each year, with preference given to research that correlates with existing Hospital priorities.

Other donations received for Birmingham Children's Hospital are pooled by the Trustees into a General Fund giving them maximum flexibility to respond to the changing needs of the Hospital and its patients. Each year Trustees invite applications to spend these General Funds and the Grant Making Committee matches available funds to the best applications, favouring in particular projects that do not have available Designated Funds to support them.



Trustees

- Custodians of the Charity

BCH Charities has up to seven Trustees who make up the Board of Trustees. They are unpaid volunteers who set the strategy for the Charity and make sure it is implemented. Trustees elect a Chairman from amongst their number who chairs meetings of the Board of Trustees and takes a more active role in supporting the Charity Chief Executive in his management of the Charity.

Trustees are appointed under arrangements made by the Secretary of State for Health under Section 51 of the NHS Act 2006. Vacancies are advertised and all potential Trustees must be interviewed and recommended by a panel consisting of two members of the Charity and one external assessor. Candidates must show knowledge of and an interest in the Hospital and the community it serves and be willing to give the time necessary. Trustees are also selected to give the Charity a good mix of appropriate professional skills, such as finance, investment and fundraising.

Trustees are appointed for a fixed term of not more than four years (renewable to a maximum of ten years in total). New Trustees receive an induction pack consisting of the Governing Documents, previous trustee reports and accounts, relevant Charity Commission guidance, and policies and procedures of the Charity and they are given a tour of the Hospital. Appropriate training is provided in areas including charity law and administration, investment management and charity finance. The Charity's professional advisors provide useful material, and membership of the Association of NHS Charities gives the Trustees access to regular conferences and training events.

Trustees have read and had regard to the Charity Commission's guidance "Charities and Public Benefit" as well as other guidance produced for NHS Charities.

During the year 2009-10 the following Trustees held office:

Name	Term of Office
Richard Beckett	First appointed 1 October 2005 Term of office expired 30 September 2009
Derek Hall	First appointed 9 September 2002 Resigned 16 June 2009
Sue Jay	First appointed 1 May 2005 Term of office expires 30 April 2013
Jillian Mann	First appointed 1 August 2003 Term of office expires 31 July 2011
David Proops	First appointed 1 January 2010 Term of office expires 31 December 2013
Hugh Reynolds	First appointed 9 March 2009 Term of office expires 8 March 2013
John Russell	First appointed 9 September 2002 Reappointed until 8 September 2012
Katie Silvester	First appointed 1 July 2007 Term of office expires 30 June 2011

Sue Jay

Sue is an interior designer who has spent many years dedicating her free time to the voluntary sector. She has been a member of PTAs and Boards of School Governors and spent 21 years as a member of the National Association of Ladies Circles, serving at local and national levels. During those years she worked closely with many charities, but especially Cancer Research UK for which she received a special award. Sue was a National Board member for five years and was the National President for 2001-2002.

Sue is Vice-Chairman of the Board of Trustees and chairs the Trustees' Fundraising Committee.

Professor Jillian Mann

Jill completed her medical training in London and Birmingham. She specialised in cancer and blood diseases and was a consultant for 30 years at Birmingham Children's Hospital, where she developed the services for children with these disorders. She was a founder member of the UK Children's Cancer Study Group and worked for the UKCCSG and many national and international committees. Now retired from clinical practice, she continues to undertake research and pursue her education interests.

Jill was Chairman of the Board of Trustees until June 2009.

Professor David Proops

David first came to Birmingham in 1965 to train as a dentist and subsequently studied medicine. He undertook further training in Toronto before being appointed consultant ENT head and neck surgeon to the Birmingham Children's Hospital and the Queen Elizabeth Hospital and has recently retired from clinical practice. David has been President of the British ENT Society and is visiting professor at the University of Aston where he is still actively engaged in research. He is also a trustee of the TWJ Foundation.

Hugh Reynolds

Hugh has been a Chartered Accountant for over 30 years and recently retired as Senior Partner of a firm based in Lichfield. He has been a school Governor for 8 years and is an independent financial examiner of charity accounts. Hugh is also a member of his local Village Hall Management Committee and in his spare time he enjoys walking in the Welsh hills.

Hugh chairs the Trustees' Investment & Finance Committee.

John Russell

John is a retired stockbroker and trustee of several Midland charities who has been Chairman of the Birmingham Stock Exchange Association and President of the Securities Institute. He served on Lichfield City Council for a number of years, chairing the Planning and Finance and General Purposes committees. He was also the Mayor of the City of Lichfield.

John is Chairman of the Board of Trustees.

Katie Silvester

Katie is a partner of a national firm of solicitors based in their Birmingham office. Since training in Cambridge and Manchester, she has worked in Birmingham. Katie is a governor of The Sixth Form College Solihull and of Hockley Heath Primary School and was for many years a member of the Council of the Birmingham Law Society. Katie chairs the Trustees' Grant Making Committee.

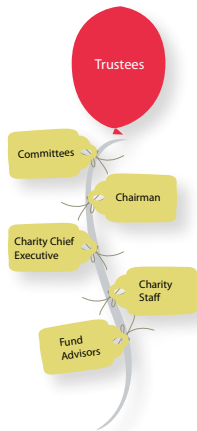
Vacancy

There is currently one Trustee vacancy, and because terms of office are limited there is a regular requirement for new Trustees. If you would like to find out more about what is involved in being a Trustee, please contact the Chairman of Trustees or the Charity Chief Executive, in confidence, to obtain further information.

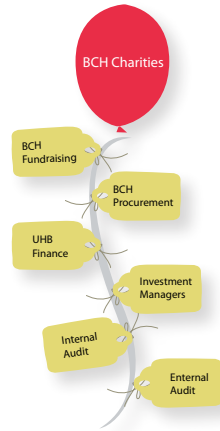
Working in Partnership for Birmingham Children's Hospital

The Trustees have established a number of committees to provide detailed scrutiny of the work of BCH Charities and to make appropriate recommendations to the Board. These specialist committees, and less formal contacts, provide an opportunity for Trustees, Charity staff, Hospital staff and professional advisors to work together in support of Birmingham Children's Hospital.

Administrative Structure



External Support Structure



Fundraising Committee

to provide detailed scrutiny of the Charity's fundraising objectives, strategy and performance on behalf of the Trustees.

Grant Making Committee

to make recommendations to Trustees for projects to be funded, by conducting a competitive application process, and to evaluate funded projects on behalf of the Trustees.

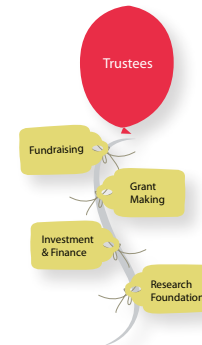
Investment & Finance Committee

to provide detailed scrutiny of the Charity's investments, accounts and its financial affairs on behalf of the Trustees.

BCH Research Foundation

to support high quality research into diseases of children by providing expert advice to Trustees on research and liaising with the BCH R&D office in monitoring and reporting on research projects funded by the Charity.

Committees



Controlling Risk to protect the future of the Charity

Trustees continued to fully engage with risk management, maintaining an active and regular review of potential risks to the Charity achieving its objectives, and monitoring the controls adopted to mitigate those risks.

The Charity continues to be exposed to the risks associated with fundraised income declining or failing to grow as required to fund the further improvements to patient care which are needed. There is also the continuing risk associated with holding stock market investments.

These risks are mitigated by regular monitoring of fundraising activity and performance, taking appropriate professional advice and maintaining a diversified investment mix.

Investing in Good Governance

It takes money to make sure that a charity the size of BCH Charities is run properly and achieves its potential. However these costs do not have to be high, and BCH Charities spent £98K (08/09: £75K) on Governance. This equates to just over 3p per £1 of income, or 3p per £1 of charitable expenditure.

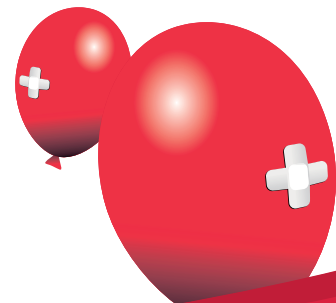
In addition to Governance costs, the Charity spent £128K (08/09: £129K) on administering the spending of charitable grants. This equates to just over 4p per £1 spent on grants.

Spending today to receive tomorrow

The Trustees, acting on advice from fundraising professionals, remain committed to investing an appropriate proportion of their income each year on fundraising. Their ambition is to continually grow the amount of money donated so that they can spend even more on improving the experiences of patients.

Members of the Hospital's Fundraising Department apply for grants, solicit donations, organise fundraising events and co-ordinate the activities of our supporters both in the Hospital and in the wider community on behalf of BCH Charities. Their salaries and departmental overheads are paid by the Hospital which is reimbursed by the Charity according to an agreed budget.

Total funds raised excluding legacies fell slightly during the year to £2,110K (07/08: £2,180K). The costs of raising this money grew to 26p per £1 raised (07/08: 17p per £1 raised) as new staff were recruited to increase the capacity of the fundraising team.



Investing for the Future

Investment & Ethical Policy

The Trustees of BCH Charities must ensure that donations are spent effectively and efficiently for the benefit of Birmingham Children's Hospital and its patients. This means that there will be time between receiving donations and spending them when they can be invested to further increase their value and earn extra income for the Charity. To help them with their investment decisions, Trustees have appointed expert Investment Managers.

The Hannah Eliza Guy endowment is invested in COIF Charities Investment Fund Income Units, managed by CCLA Investment Management Limited. Income is held as cash in a separate bank account until spending decisions can be taken.

Other donations which do not need to be spent straight away supporting Birmingham Children's Hospital were invested in the year by Schroder & Co Limited with the objective to maximise total return. The Charity's governing documents allow the Trustees to invest in a wide range of shares and investments, provided they are not speculative or hazardous. In addition, the Trustees do not consider that investments connected to the tobacco industry would be appropriate for a Charity which works to improve children's health.

Appeal funds and funds intended to be used to pay grants in the near future are held on deposit to minimise investment risk.

Reserves Policy

The Trustees have established a reserves policy as part of their plans to provide sustainable, long-term support to Birmingham Children's Hospital for research, education, new equipment and facilities, and staff and patient benefits.

The Trustees calculate the reserves as that part of the charity's unrestricted income funds that is freely available, after taking into account designated funds which have been earmarked for specific projects, to fund research, and to support specific parts of the Hospital.

The reserves at 31 March 2010 stood at £3,107,000 and were calculated as follows:

Total funds of £7,865,000
Less Endowments £519,000
Less the Research Foundation Fund £1,283,000
Less restricted funds £93,000
Less other designated funds £2,863,000

Total reserves £3,107,000

The Trustees intend that designated funds are spent within a reasonable period of receipt and therefore foresee a need only to maintain reserves sufficient to provide certainty of funding for the research programme and continuity for general grant making.

The agreed target range for reserves is between £2m to £3m to ensure the stability of grant funding to the Hospital.

Recovery in the value of investments in 2009-10 has restored reserves to just over their target range, even after the increases in charitable expenditure by Trustees during the year.

The Trustees continue to review the balances held in designated funds, in accordance with the provisions of the NHS Acts relating to charitable funds, to determine whether these funds are likely to be committed in the near future and the extent to which there is a continuing need identified for any particular designated fund(s). In the event that the need identified for any designated funds no longer exists, those funds will be redirected to the most appropriate current need of the Hospital.

A Secure Foundation to Build On

The Balance Sheet of a charity gives a snapshot of the money it holds and the money it is already committed to spend. It is therefore a picture of the money available to support the future plans of the charity.

The Balance Sheet of BCH Charities is shown below, together with an explanation of its different elements:

	31-Mar-10	31-Mar-09
	£'000	£'000
Fixed Asset Investments	8,003	6,187
Net Current Assets / (Liabilities)	(138)	550
Total Net Assets	7,865	6,737
Capital Funds (Endowment)	519	408
Income Funds		
<i>Hannah Guy Income</i>	12	74
<i>Appeal Funds</i>	81	653
<i>Designated for Research</i>	1,283	773
<i>Other Designated Income Funds</i>	2,863	3,041
<i>Reserve for future grants</i>	2,359	1,210
<i>Contingency Reserve</i>	748	578
Total Funds	7,865	6,737

Fixed Assets are investments in quoted stocks and shares.

Net Current Assets / (Liabilities) represents the difference between cash held in BCH Charities bank accounts and the value of grants made and bills received awaiting payment.

Capital Funds (Endowment) refers to the Hannah Eliza Guy endowment which is held as capital in perpetuity so that only the income is available to be spent.

Hannah Guy Income is money earned from investing the Hannah Guy Endowment which can only be used for specified purposes.

Appeal Funds records donations received towards specific appeals which have yet to be used for the specified purpose(s).

Designated for Research are those donations and legacies received by BCH Charities for paediatric research which are spent following recommendations from the BCH Research Foundation.

Other Designated Income Funds represent over 100 separate funds which the Trustees have created at their discretion so that donations received through wards, departments and specialities can be channelled towards charitable purposes in those wards, departments and specialities. These funds are supervised by about two hundred Fund Advisors from the wards, departments and specialities concerned.

Reserves for future grants is money available for distribution by the Trustees at their discretion which have not already been designated. Trustees believe it is prudent to hold some reserves to fund future grants in the event that new income is not received during the year.

Contingency Reserve represents amounts which the Trustees believe it is prudent to keep in reserve to cushion adverse movements in investment values.

Further details of the different Funds can be found in Note 16 to the Financial Statements.

Progress made towards delivering Charity Objectives

Trustees set a number of performance targets linked to each of their objectives for the Charity. In 2009-10 the majority of targets have been achieved:

Careful stewardship of funds

Annual Accounts should receive an unqualified audit report	✓	Annual Accounts have an unqualified audit report
Investment performance is not less than 0.5% below the agreed benchmark	✓	Investment performance was 1.5% above the benchmark for the full year
All returns required by the Charity Commission are received before the due date	✓	Report, accounts and annual return filed on 29 January 2010 (all due 31 January 2010)
Each Trustee should attend at least 75% of Board Meetings and at least 50% of the meetings of each of the Committees each year	✓	All Trustees exceeded these attendance targets. Two Trustees attended all meetings



Provision of additional equipment and facilities

At least 50% of total income should be committed by the Charity towards this objective	✓	Trustees spent just over £2M on this objective, representing 67% of income in the year
All expenditure by the Charity is supported by the Foundation Trust	✓	All grants for equipment and facilities were subjected to the Foundation Trust procurement procedures
All grants awarded are evaluated within 18 months of award	✓	An annual grant evaluation was carried out during the year



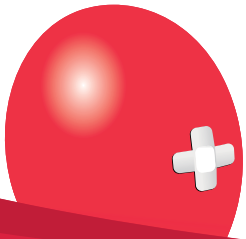


Support and encouragement of world class child health research

There should be at least one annual competition for research grants	✓	There was one main competition for grants in the year
All grants should be evaluated within 18 months of award	✓	The Trustees received an annual report from the Chairman of the Research Foundation
All grants and their outcomes should be published on the Charity website	✗	The Charity only launched its website (www.bch.org.uk) at the end of the year and has not yet published details of research grants
At least 25% of total income should be committed towards research expenditure	✓	Expenditure of £668K represents 22% of income, an increase on previous years. In addition a new commitment of £1M was made to the Research Foundation designated fund

Assisting Birmingham Children's Hospital with its planned major developments

The Charity should engage with the Foundation Trust to develop a shared Case for Support	✓	The Charity and Foundation Trust worked together on the Kidney Kids Appeal
The Charity will commit its unallocated reserves to underwriting a capital appeal	—	The Charity has held discussions with the Hospital about a new capital appeal for 2010/11
The Charity will invest in a professional fundraising team which proactively seeks new income	✓	Investment increased in fundraising as new members joined the team
The Charity will make available a separate budget to support marketing and PR activity by the Hospital	✓	The agreed budgets for fundraising included marketing and PR expenditure
The Charity will set realistic fundraising targets based on industry best practice	✓	Fundraising ratios compare favourably with those of other fundraising charities

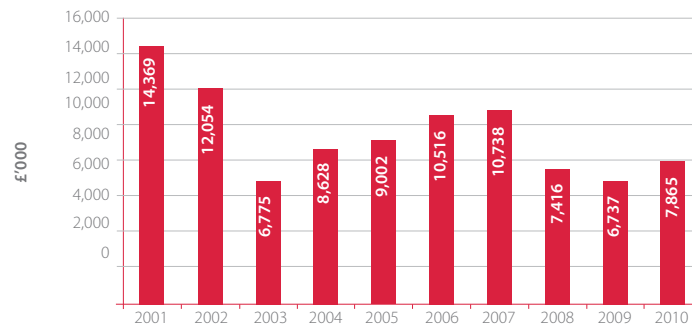


Investments Recover

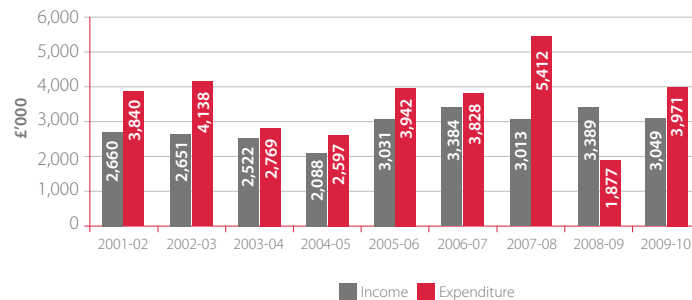
Investment performance is monitored by the Investment and Finance Committee of the Trustees which receives regular reports from the investment managers. During the year, the Schroders Investment Portfolio grew by 32.2% (08/09: -22.5%). This compares with the composite benchmark for the portfolio which increased by 30.7% over the same period (08/09: -19.2%). COIF Units increased in the year by 27.2% (08/09: -27.5%) which compares with the APCIMS Balanced Index (which Trustees use as the benchmark) of 28.3% (08/09: -20.4%). Trustees were pleased that the portfolio recovered most of the losses sustained in 2008-09 during the year and are reassured that performance over the longer term remains comparable with the benchmarks. However Trustees decided it would be prudent to commission an independent review of historic investment performance and as a result of its findings they approved a new investment mandate with a lower predicted volatility for the portfolio.



Balance Sheet Value



Income & Expenditure



Support comes from the Wider Community too

The ability of BCH Charities to continue its vital support for Birmingham Children's Hospital is dependent on its ability to maintain and increase donations from the general public. Trustees are therefore appreciative of the support from those who not only donate their own money, but who inspire others to donate through their fundraising efforts.

Being Paid to "Just Sit Still"

Getting young children to "Just Sit Still" is a challenge any parent would identify with. So imagine trying to persuade over 12,500 children to all sit still for two minutes at the same time.

That is what happened on Friday 3rd April 2009 when nearly fifty schools from across the West Midlands took part in the Big Sit Still in aid of the Kidney Kids Appeal. And in return for their efforts, they raised over £40,000 for Birmingham Children's Hospital Charities.

There was a more serious message involved too, because the children who will benefit from all that fundraising effort are the hundreds of sick children receiving dialysis every year at Birmingham Children's Hospital. These children have no choice but to sit still for several hours at a time whilst they are hooked up to a dialysis machine. Thanks to the Kidney Kids Appeal they now have a bright, colourful, spacious area in the new Kidney Unit, with real daylight and views of the outside world.

More still to do

Achieving its mission involves BCH Charities in an ongoing programme of fundraising today to produce the funds needed to invest in the health of children tomorrow. This involves working with BCH NHS Foundation Trust to develop the facilities it will need to remain at the forefront of child healthcare.

The Hospital has seen some major redevelopments in recent years, all of which have required at least some charitable funding to make them possible. But there is more still to do to transform the site and provide an excellent environment to match the excellence of the clinical care. These enhancements can only be delivered if sufficient donations are received and the Charity will therefore continue to invest in fundraising to bring in the money required.

To maintain the quality of care provided by the Hospital the Charity actively seeks to contribute to the education and continuing professional development of hospital staff by supporting relevant courses and conferences.

Continued investment in research will help to identify the treatments of tomorrow, and it is therefore a priority for Trustees.

The Trustees will also continue to support the medical and nursing staff who act as Fund Advisors as they identify new equipment for wards and departments and new ways to make children's stays in hospital more comfortable.

Thanks to the people who make it all possible

Trustees delegate the day to day management of BCH Charities to their Charity Chief Executive, Stuart Reynolds. He is responsible for carrying out the decisions of Trustees and for working with professional advisors and the representatives of BCH NHS Foundation Trust and UHB NHS Foundation Trust who provide services to the Charities. He is assisted by Steve Murphy and Zarin Colaba.

The Fundraising Team at BCH NHS FT works on behalf of BCH Charities to raise as much money as possible for the various charitable programmes, and the Charitable Funds Team at UHB NHS FT provides the financial administration for the Charity.

The Trustees would like to pay particular tribute to the role of volunteers - to the members of staff who give of their time out of hours in support of the work on the committees, in developing ideas for research and working to identify how charitable grants can help them care for the children; and also to the volunteer fundraisers who do so much to encourage others to enrich the lives of children through donations and fundraising activities.

Trustees are also grateful to the professional advisors who help them discharge their responsibilities:

Investment Managers

CCLA Investment Management Limited,
80 Cheapside,
London, EC2V 6DZ

Schroder & Co Limited
100 Wood Street,
London, EC2V 7ER

External Auditors

Mazars LLP,
45 Church Street,
Birmingham, B3 2RT

Internal Auditors

RSM Tenon LLP,
5 Ridge House,
Ridge House Drive,
Festival Park,
Stoke-on-Trent, ST1 5SJ

Bankers

NatWest,
166 High Street,
Harborne,
Birmingham, B17 9PW

Legal Advisers

Mills & Reeve LLP
78-84 Colmore Row,
Birmingham, B3 2AB

Official Details

BCH Charities is registered with the Charity Commission under the single Registered Number 1074850. There are three charities administered by the Trustees, as follows:

Birmingham Children's Hospital Charity (Registered Number 1074850-1)

Formerly known as the Birmingham Children's Hospital NHS Trust Charity, the governing document is a deed dated 31 October 1998 as amended by Statutory Instrument 2001 No 792 and by a supplementary deed dated 29 July 2003.

Its objects are "for any charitable purpose or purposes relating to the National Health Service".

Birmingham Children's Hospital General Charity (Registered Number 1074850-2)

Formerly part of the "The Special Trustees for the Former United Birmingham Hospitals Trust Funds General Charity" this charity is governed by a Scheme of the Charity Commission dated 19 April 1999 as amended by Statutory Instrument 2001 No 792 and by a resolution dated 29 July 2003.

Its objects are "to further such charitable purpose or purposes as the Trustees shall think fit, relating (a) to the hospitals for which the trustees are Trustees, including research; or (b) to any other part of the health service associated with those hospitals".

Hannah Eliza Guy (Registered Number 1074850-3)

This charity is governed by a Scheme of the Charity Commission dated 2 November 1987, as amended by a Scheme of the Charity Commission dated 10 March 2004.

Its objects are "to promote the preservation or recovery of physical or mental health or the rehabilitation of persons (with a preference for babies and children under 14 years of age) who have been suffering from illness and who are or have been patients of Birmingham Children's Hospital or any of the following hospitals: Queen Elizabeth Hospital, Queen Elizabeth Psychiatric Hospital, Birmingham Women's Hospital or Birmingham Dental Hospital, or such other hospitals as may from time to time form a part of the NHS Trusts (or their successors) currently responsible for the hospitals listed".

Contact Details

The principal address of BCH Charities is:

Birmingham Children's Hospital Charities
PO Box 12008
Birmingham
B4 6WZ

☎ 0121 333 8598

✉ bch.charities@bch.nhs.uk

The address of the Finance Office is:

BCH Charities
Finance Directorate
PO Box 3863, Selly Oak
Birmingham
B29 6RQ

☎ 0121 627 8550

For Fundraising queries please contact:

Fundraising Department
Birmingham Children's Hospital
Birmingham
B4 6NH

☎ 0121 333 8506

✉ info@bch.org.uk

The Trustees' Annual Report comments on key features of the full accounts which, if not attached, are available from the Principal Office. Figures are extracted from the full accounts which should be consulted if more details are required. Copies of the full accounts have been lodged with the Charity Commission. They carry an unqualified audit report.

Why not show your support by visting our online charity shop



Check out our fantastic **Red Balloon Exclusives** including our fabulous new Vintage Style T Shirts and our beautiful silver pendant, designed exclusively for the Children's Heart Appeal by Sophie Court at Birmingham School of Jewellery.

www.redballoontrading.co.uk