



Impact Newsletter

Summer 2021



Contents

Foreword

From Mark Brider

2020/21 Performance

In a Year Like No Other

The impact of the COVID-19 pandemic

Four Priority Areas

The benefit of charitable funding across our hospitals

Patient and Family Experience

Where charitable money has enhanced the experience for patients

Impact in Action

Supporting play: West Bromwich Building Society

Developing Hospital Environments

How charitable support has helped to develop our hospitals

Enabling Technology and Equipment Advances

Enhancing technology at our hospitals

Impact in Action

The introduction of Radiology Bi-Plane technology: Amelia's story

Research, Learning and Innovation

Pioneering research made possible through charitable funding

Our Latest Campaigns and Appeals

Help Us Continue To Make a Difference

Our Donors and Supporters



Photo taken prior to outbreak of COVID-19



03

04

06

08

10

12

14

16

18

20

22

24

26



A note from our Patron, Ben Francis

Founder and CEO of Gymshark, Ben Francis recently became our first-ever charity Patron. A role that will see him help us to raise awareness and the much-needed funds to enable our hospitals and staff to make a real difference to all who use their services.

On accepting the Patronage, Ben said:

"I've long been in awe of the incredible work of Birmingham Women's and Children's Hospitals. My mum has worked as a nurse at the Queen Elizabeth in Birmingham all of my life, so I know first-hand how unbelievably hardworking they are and the impact they have on so many people. When the guys at the charity approached me about becoming a Patron, I accepted without hesitation. I look forward to working with them to continue to raise awareness and funds for this amazing charity."

We're incredibly excited to be working with Ben and look forward to seeing how together we can achieve and deliver our vision.

Foreword

I'm delighted to have the very great honour of introducing you to our brand-new charity impact newsletter. Your support is absolutely invaluable to us and with this publication, we hope to not only inspire you but also thank you, by sharing fantastic examples of where and how your much-needed money has been spent across our hospitals.

For those of you who don't know me, I'm the very proud, new CEO of Birmingham Women's and Children's Hospital Charity.

I started in post in April, joining from Children with Cancer UK, but my background has mostly been in banking. I've always had a passion for helping others and it is a real privilege to be able to use my previous experience to help support the future growth of Birmingham Women's and Children's Hospital Charity.

I was already familiar with the fabulous work of the Trust and the pivotal role the charity has in helping it achieve its strategic objectives. I knew instantly I wanted to play my part in helping to fund its pioneering work to improve the lives of women, babies, children and families – regionally, nationally and internationally.

Looking forward, we know charitable support will, more than ever before, become increasingly important to our two hospitals, allowing them both to continue delivering projects that go above and beyond NHS standards.

In my new position, I'm responsible for the transformational development and delivery of a strategy to significantly grow charitable income.

I've already been extremely humbled and overwhelmed by the lengths you've all gone to over the years to support us, in particular the outpouring of love you've shown our most vulnerable patients and brave frontline heroes over the past year.

No one could have foreseen the impact of COVID-19. It's been incredibly challenging for us all and I hope you and your loved ones have remained safe during these unprecedented and very testing times.

With the easing of restrictions in sight, we're ready to face the new and unexpected challenges the coming months and years will surely bring. But as always, with your generous support and friendship, together we will stand side-by-side with our NHS colleagues to ensure the women, children, babies and families that rely on us continue to receive only the very best.

I hope you enjoy reading our first impact newsletter and finding out how your support has benefitted our two very special hospitals. I look forward to meeting you all in person as soon as it is safe to do so.



Mark Brider
CEO of Birmingham Women's and Children's Hospital Charity

2020/21 Performance

Thanks to our fabulous supporters, we've had another fantastic year. Between April 2020 and March 2021...



17,260 miles

were **run, cycled** or **walked** by our supporters



8,141 babies

were birthed at our Women's Hospital



1,810 people

viewed our first-ever virtual events, **Big Gig** and **Christmas Concert**



85,428 children

were treated at our Children's Hospital



£990,000

worth of Gift in Kind donations were offered during the first few months of the pandemic



46 players

won a total of **£3,955** in our lotteries



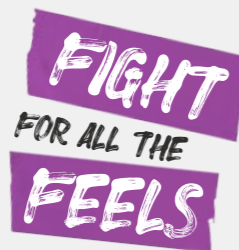
£363,800

was raised through our **COVID-19** and **Rapid Response Appeals** to allow us to quickly support those who needed it during the crisis



Two appeals

were launched, including our **COVID-19 Emergency Appeal** and first-ever youth mental health campaign, **Fight For All The Feels**



1,462 limited edition rainbow pin badges

were purchased and worn with pride



131 new supporters

signed up to donate **£10 or more** a month as a much-needed regular giver

650 hours

of volunteering time was gifted during the pandemic



238 schools

fundraised for us

374 businesses

supported us

366 branded hoodies

were sold via our online shop (that's one a day for the past year!)



22 gifts in wills

were left to us by visionary supporters



172 volunteers

signed up to support us



In total we raised a whopping **£5.68m**

£5.68m

How your money has helped

£1,500

launched the Safaa Alam Maternity Safety Learning Scholarship at our Women's Hospital. This annual scholarship was set up in loving memory of Registered Midwife Safaa Alam who sadly lost her life last year to COVID-19. This scholarship has the blessing of Safaa's husband and family who said:

"As is the case in many faiths, we learn to always keep those who have passed in our thoughts and prayers and this scholarship will no doubt enrich this belief with those who apply and are awarded a scholarship. They will undoubtedly know the story in remembering Saf".

£20,000

purchased TV screens, LED strip lighting, iPads and Apple TVs to create special 'Sensory Suites' in several CT scanner rooms across our Children's Hospital. The equipment has been added to provide patients with a brand-new environment which is bespoke to their taste and mood. Our young patients are now given an iPad on arrival, which allows them to personalise the environment for the duration of their scan, thereby reducing any anxiety and improving their experience. This includes the colour of the lights in the room, the music being played and the images they can see around them.

£4,000

was spent on play and entertainment equipment for our orthopaedic oncology patients who will soon be cared for on Ward 15's new annex at our Children's Hospital. The equipment included portable DVD players, DVDs, game consoles and sensory toys.

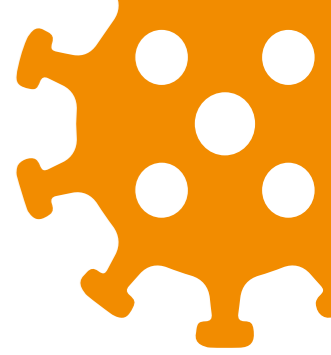
£31,000

helped the Neonatal Intensive Care Unit at our Women's Hospital purchase three LifeStart resuscitation trolleys. These trolleys allow resuscitation of a baby to be done at a mother's bedside. The ability to do this not only improves a baby's survival rate but it also reduces baby and parental anxiety and distress associated with immediate or otherwise unnecessary separation.





In a Year Like No Other



COVID-19 brought with it a number of unprecedented challenges. Partnerships were put on hold and planned fundraising activity was postponed, but the kindness of our wonderful supporters soared, ensuring we could keep doing all we could to help the work of our hospitals.

Your outstanding generosity went on to support our hospitals in the most brilliant of ways. Here's just a few examples of how your incredible support helped throughout the pandemic:



A grant from the Burdett Nursing Trust enabled us to provide invaluable resilience and ongoing PTSD training to our nurses, supporting them during undoubtedly the hardest time of their careers.

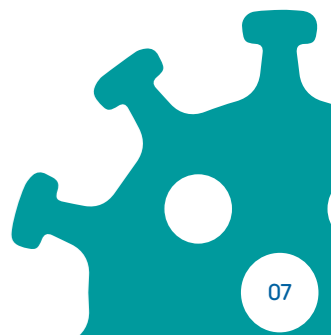
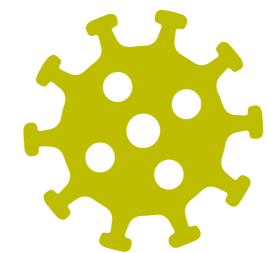
Gifts in Kind enabled us to create care packages and hampers for our staff, which were full of toiletries, food and personal care items to keep them going.

Public donations allowed us to send out care packages to patients being treated by our mental health service, Forward Thinking Birmingham, as well as provide mobile phones to the most vulnerable young people to ensure they could continue to access care from home.

Generous donations to our charity also enabled research into the childhood disease PIMS-TS, borne in children infected with COVID-19, to better understand the illness and how to treat it (find out more on page 21).

An army of volunteers from Gymshark offered invaluable support to help our Trust continue delivering its vital services. Over 650 hours were donated to deliver medication and prescriptions across the region and beyond.

Above all else, it was thanks to our fabulous fundraisers who turned their hands to all manner of virtual and socially-distanced events that we could continue to raise money for our hospitals. We can never thank you all enough.



Four Priority Areas

From championing state-of-the-art equipment and groundbreaking research to creating the very best patient environments, charitable donations allow us to be at the forefront of what is possible, in order to make a real difference to all who use the hospitals' services. To do this we fund pioneering work in four priority areas:

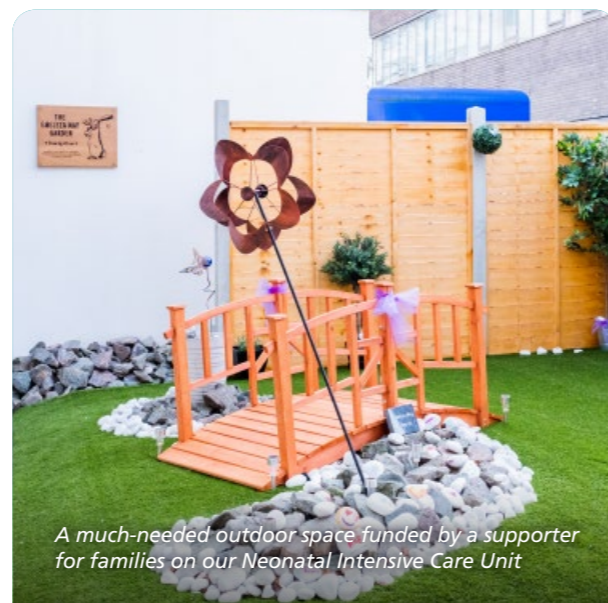
1

Patient and Family Experience

Our patients and their families are at the heart of everything we do. We understand that feeling comfortable and safe can have a huge impact on a patient's wellbeing and overall experience. By funding family-friendly spaces, improved ward décor and sensitive and appropriate bereavement support services we make our hospitals less daunting for patients of all ages.



Our Trust CEO, Sarah-Jane Marsh, helps a patient shoot some hoops with her family in our hospital playground



A much-needed outdoor space funded by a supporter for families on our Neonatal Intensive Care Unit

2

Developing Hospital Environments

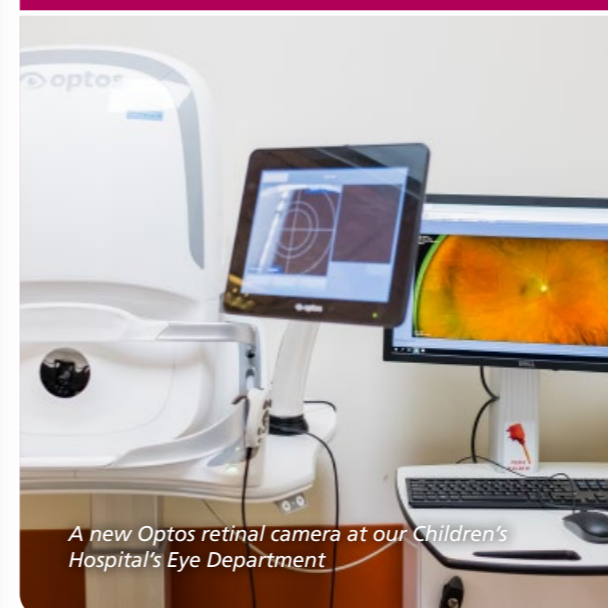
By creating spaces that focus on our patients' needs, we help our doctors, nurses and midwives provide outstanding care with compassion.

From upgrading wards, theatres and treatment areas to refurbishing waiting rooms and funding brand-new, state-of-the-art buildings, our charity has left an imprint on all four corners of our two hospitals.

3

Enabling Technology and Equipment Advances

Many of the surgical techniques, treatments and technologies used today were mere ideas just a few decades ago. Charitable donations are vital to fund the latest and most-innovative equipment to provide life-saving care, new treatments, speedier diagnoses and fewer invasive procedures. These breakthroughs enable our medical staff to be constantly at the forefront of what is possible.



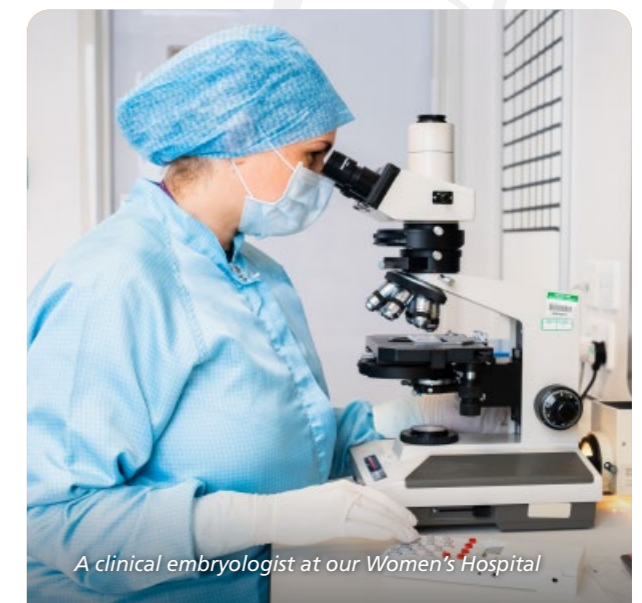
A new Optos retinal camera at our Children's Hospital's Eye Department

4

Research, Learning and Innovation

It's our job to encourage the next great idea and so we are committed to supporting high-quality research into women's and children's health and diseases.

Charitable donations have delivered internationally recognised research which has discovered new cures, treatments and approaches, equipping our staff with the knowledge, skills and resources needed to accelerate and advance medical breakthroughs and pioneer change.



A clinical embryologist at our Women's Hospital



Patient and Family Experience

As well as the world-class care and treatment our patients receive, we strive to ensure they, and their families, have the best possible experience while they're with us. From improving our hospital environments to funding new equipment or accommodation, thanks to the generosity of our wonderful supporters, we can go above and beyond for our patients.

Overnight Accommodation for Parents

To allow us to support other NHS Trusts in the region at the height of the COVID-19 pandemic, our Children's Hospital increased its intensive care capacity in order to treat more of the sickest children from across the Midlands. However, this meant worried parents travelling further from their homes to be with their children.

Rather than face arduous journeys to and from our Children's Hospital, we secured funds from NHS Charities Together, as well as generous contributions from a number of charitable trusts and foundations, to provide overnight accommodation in local hotels and apartments.

A New Youth Mental Health Model of Care

Youth mental health has taken a huge hit this last year. On top of the challenges of growing up, young people have faced wave after wave of uncertainty and isolation due to COVID-19. Cut off from education, unable to work and uncertain about the future, the pandemic has intensified existing mental health issues and created new ones.

Thanks to a generous grant from NHS Charities Together combined with donations from our incredible supporters, we've reached the first

milestone in a new campaign to launch a network of Peer Support Workers who will, once appointed, deliver a new youth mental health model of care.

The Peer Support Workers will all be aged between 16 and 24-years-old and come from the same communities and backgrounds as the people they will support. Crucially they will all have their own lived experiences of mental illness, therefore, not only will they be able to help young people with their medical recovery, they will aid them with their personal recovery too.

The Peer Support Workers will support Forward Thinking Birmingham, our Trust's unique mental health service for children, young people and young adults (0 to 25-years-old).

Once established, this new care model will be the first of its kind within Children's and Adolescent Mental Health Services.

To learn more about our Peer Support campaign, see page 23.

The Power of Play

Play is serious business at our Children's Hospital. It allows patients and their families to make happy, lasting memories as well as offering a respite from medical treatments. Read more about why play is so important to us on the next page.

Impact in Action:

West Bromwich Building Society

For the past 15 years, the West Bromwich Building Society has supported our Children's Hospital, raising almost an incredible £850,000.

The West Brom's understanding of the importance of play stemmed from years of volunteering at our Children's Hospital, primarily supporting our weekly Art Kart volunteer initiative, hosted in our busy Outpatients Department's waiting area.

Art Kart is essential for keeping restless children distracted while waiting, sometimes for unavoidably long periods of time, to be seen by our expert medical staff.

Arts and crafts activities decrease stress and anxiety levels - of both patients and parents alike - by providing youngsters with something creative and fun to do to keep them occupied.

These sessions highlighted to the West Brom the importance of play when used as a distraction tool, as well as allowing patients to create positive associations with coming to hospital instead of frightening ones.



In recent years, money raised through its Red Balloon Account, a special savings product designed to benefit both its customers and our Children's Hospital, has gone towards supporting the important services provided by our expert team of Play and Recreation Facilitators and Workers.

Play is an essential part of a young patient's experience, as children who are happy and relaxed cope better with their treatment and recover a lot quicker than those who are more anxious. Play, delivered by our Play and Recreation Facilitators and Workers, also gives patients and their families a degree of normality, allowing them to make memories at their child's bedside and take a much-needed break from the stress and worry of life in hospital.

Last year the West Brom's donation, along with other generous gifts, helped us to fund 12 members of our play and recreation team, who help more than 250 children and families every single day.

The West Brom were also a key supporter of our Out To Play Appeal, a £230,000 appeal launched in 2017 to update our outdoor play area. The brand-new playground opened in late 2019 and has offered a place of respite for children and families visiting the hospital.

During an otherwise daunting time, especially in the wake of COVID-19, the West Brom's support to continue play in our Children's Hospital was invaluable.





Photo taken prior to outbreak of COVID-19



Developing Hospital Environments

Hospital environments play a big part in the overall experience of our patients and visitors, as well as staff wellbeing.

Ensuring our hospitals offer welcoming and comfortable spaces for patients, families and staff is of the utmost importance.

Thanks to our donors and supporters, in the last year we have continued to improve our hospitals' surroundings.

The Magic of Roald Dahl

In January 2020, Her Royal Highness The Duchess of Cornwall visited our Children's Hospital to unveil a unique stained-glass window installation, featuring some of Roald Dahl's most iconic characters, specially designed by the world-famous children's illustrator Sir Quentin Blake.

The £234,000 project was the brainchild of Felicity Dahl, wife of the late author, who often used to visit our Children's Hospital as a child with her father, Professor Alphonsus d'Abreu, then Dean of the Medical Faculty.

The instantly recognisable characters have transformed the environment for hundreds of children and young people who visit our Children's Hospital every day, providing distraction which impacts on their healing and overall sense of wellbeing.

Recharge Rooms

Thanks to a grant of £50,000 from NHS Charities Together, we were able to support our brilliant

colleagues while they continued to care for patients. during the height of the pandemic.

This funding supported resilience training as well as a host of staff wellbeing resources including Recharge Rooms on site at both of our hospitals. The Recharge Rooms boasted massage chairs and specially-designed sleep 'pods', which offered staff a place of sanctuary in an otherwise very busy environment.

Staff were encouraged to spend 15-20 minutes in one of these pods during their break so they could take the time they needed to rest, recharge and avoid burn out.



Enabling Technology and Equipment Advances

Only the best is good enough for our patients, which is why we continually strive to fund the most advanced and up-to-date medical equipment and support groundbreaking techniques.

Interventional Radiology and Bi-Plane Technology

Thanks to the wonderful generosity of the Clive and Sylvia Richards Charity, we were able to invest in new Interventional Radiology and Bi-Plane technology at our Children's Hospital.

Interventional radiology refers to a range of techniques which rely on image guidance, using x-rays, ultrasound, computed tomography and magnetic resonance imaging to guide equipment into parts of the body that can't usually be reached without an open operation.

Once in place, this equipment can be used to precisely deliver a range of interventions and treatments. It reaches the source of a medical problem through blood vessels or directly through a tiny incision in the skin to deliver a precise, targeted treatment.

Ultimately, Interventional Radiology and Bi-Plane technology holds the key to less risk, less pain and quicker recovery for our young patients.

Clive sadly passed away earlier this year, but thanks to his generosity he has left a legacy that will improve the care of thousands of poorly children for years to come.

Echo Machine

Gifts from some of our generous supporters enabled us to purchase new state-of-the-art echo machines for our Children's Hospital's world-leading heart unit.

The machines use ultrasound technology to create and record a moving image of a patient's heart. It is a non-invasive process which, unlike x-rays, does not use radiation.

The new machines replaced outdated equipment and now provide high resolution images and micro measurements of even the tiniest of hearts. This allows for pinpoint accuracy and enables our clinicians to create personalised surgical and treatment plans for babies and children. They also proved to be invaluable when examining and monitoring children presenting with the COVID-19 borne childhood disease, PIMS-TS.

In addition, having next generation echo technology has increased our capacity to support groundbreaking research studies and trials by monitoring the hearts of children with rare and undiagnosed medical conditions.

High-Throughput Next Generation Genetic Sequencing Platform

Thanks to an incredible donation of over £1million from Children with Cancer UK, in partnership with Kwik-Fit, children and young people living with cancer from across the West Midlands, Oxfordshire and parts of Southern England can now benefit from improved genetic testing following the purchase of a high-throughput sequencing machine.

The NovaSeq 6000 is a novel piece of DNA sequencing equipment which has enabled the rapid expansion of cancer genetic testing at the West Midlands Regional Genetics Laboratory, the UK's largest genetics laboratory, based at our Trust.

Genomic testing for patients diagnosed with cancer is important as it allows our scientists to identify pertinent DNA changes, which our doctors can then match to new and improved, and often less-toxic, cancer drugs and treatments.



Impact in Action:

Amelia's story

The introduction of Radiology Bi-Plane technology is the next step in offering our patients the best possible treatment in the most comfortable way. Patients like five-year-old Amelia, who has benefitted from our Children's Hospital's pioneering interventional radiology programme.



Amelia was diagnosed with retinoblastoma the day before her first birthday in May 2017. Retinoblastoma is a rare form of cancer that rapidly develops from the immature cells of the retina, the light-detecting inner layer of the eye. It is almost exclusively found in young children.

Amelia's mum, Rebecca, became worried when she noticed her daughter had developed a slight squint. Having raised concerns with a health visitor, Amelia was sent to her local hospital in Grimsby and immediately referred to the Retinoblastoma Service at our Children's hospital where she was examined under anaesthetic.

Usually, retinoblastoma is treated using conventional intravenous chemotherapy but thanks to our interventional radiology programme, Amelia was able to receive intra-arterial chemotherapy (IAC) which targets the drug directly into the eye. To date she has received two treatments.

She will continue to visit our hospital every four weeks for check-ups and may need additional IAC to ensure all of the tumour is destroyed.

Mum, Rebecca, said: "Amelia's recovery after IAC was much faster than if she'd received conventional chemotherapy. There are no effects on her immune system so she hasn't been unwell at all during her treatment with no hair loss, sickness or other debilitating side effects associated with traditional cancer medication. This has also meant she has spent very little time in hospital away from her family."

Her family hope Amelia will now go on to live a happy and fulfilling life. She won't be affected by the long-term effects of conventional chemotherapy, and because she lost her vision in her left eye so young, she has already adapted.

"We are extremely grateful to all of the staff who have helped treat Amelia," added Rebecca. "She was seen, diagnosed and treated within three weeks which is absolutely fantastic."

Consultant Radiologist and Head of Interventional Radiology, Dr Simon McGuirk BMedSci (Hons) MRCS (Ed) FRCR PhD, explains:

"The introduction of the Bi-Plane technology allows us to obtain the highest quality imagery for each and every case. This allows us to diagnose and treat more children safely, precisely and as soon as those interventions are required."



Dr Simon McGuirk (centre) and his team with the Bi-Plane machine

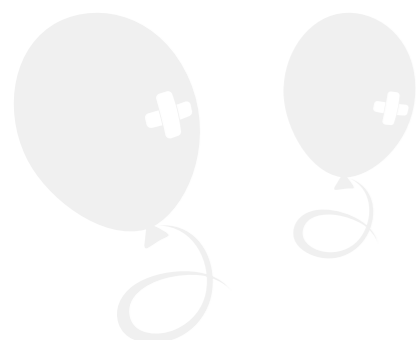




Photo taken prior to outbreak of COVID-19

Research, Learning and Innovation

Research allows our hospitals to pioneer life-changing and life-saving care and treatments. In the past year, charitable funding has supported a number of breakthrough research projects to better the future for generations to come.

Pioneering Research into Potential Treatments for Children with Coronavirus Symptoms

Following the discovery of a new disease known as PIMS-TS, which occurs in children infected with COVID-19, we provided Birmingham University with more than £20,000 of funding for urgent, pioneering research into potential treatments.

Symptoms of this new disease include a persistent fever and rash, which often requires intensive care support as the arteries around the heart become affected. Initially, treatment for the disease was based on that of the rare childhood illness known as Kawasaki Disease.

Thanks to our charitable funding and together with researchers at Birmingham University, we were able to rapidly mobilise and conduct an in-depth analysis on initial samples taken from patients at our Children's Hospital during the outbreak. This allowed us to better understand this rare, potentially life-changing condition and identify how to treat it.

Our researchers found significant changes in the monocytes (a type of white blood cell) in patients with PIMS-TS and Kawasaki's Disease – a discovery that has now allowed our doctors to understand why the disease has occurred, better assess a young patient's condition and predict resistance to current treatments.

Starving Leukaemia: Research into the Treatment of Childhood Cancers

Research is being conducted into the use of a new drug that helps to block nutrient uptake in cancer cells to allow doctors to offer a less-aggressive treatment option for children and young people diagnosed with leukaemia. This research is being led by our Children's Hospital's Honorary Consultant in Paediatric Oncology, Dr Francis Mussai, and funded by our fabulous oncology supporters, Carter the Brave.

Cancers including leukaemias and solid tumours often require multi-drug chemotherapies to treat high-risk patients. Sadly overall survival for these patients, particularly those with leukaemias or neuroblastoma, remains poor.

While clinical trials into additional therapies for these cancers are taking place, investigations into other treatments aren't as common as they should be.

Adult clinical trial research into this new drug has already shown anti-cancer activity with minimal side effects, compared to standard chemotherapies which result in much harsher and long-term after effects.

Thanks to Carter the Brave, who has so far donated £60,000 to this research, the first phase of Dr Mussai's paediatric laboratory research is now complete. Dr Mussai will now enter phase two to extract even more data to support the effectiveness of this new drug.

Future funding would support ongoing research towards a clinical trial.

Our Latest Appeals and Campaigns



Image supplied by Pinnegar Hayward Design Architects

Woodland House Appeal

We're on a mission to raise the final £1million for our Woodland House Appeal, which will allow us to break ground on our new standalone bereavement centre for families experiencing pregnancy and baby loss at our Women's Hospital.

As a centre for excellence in women's health, we believe bereavement aftercare must be better for our devastated families. Woodland House will be the first of its kind in a hospital setting and act as a blueprint for other hospitals up and down the country.

Approximately 2,000 families experience loss at our Women's Hospital every year and when complete, Woodland House will be a safe-haven, away from the hustle and bustle of the maternity wards, where they can grieve in private and get the support they need.

The new centre will boast bespoke counselling rooms, a private garden, a large communal lounge area for support groups and a family room with its own private access and garden.

It will also have a private and sensitive mortuary, offering families the opportunity to spend time with their loved ones in comfort and serenity.

"Throughout my career with the NHS, and from my international work in maternity services, I've never seen a bespoke bereavement space that is separate from a hospital's mainstream services – and that's what makes Woodland House so wonderfully special and unique."

"Hospitals must meet clinical standards but in doing so there is often a loss of warmth and homeliness. I believe Woodland House will break the stigma surrounding mothers and babies who die during childbirth by providing them with an equitable space to spend precious time following such a tragedy. Once built, it will set a new international standard of care for families who have suffered from pregnancy and baby loss and provide a beacon of light that others can follow."

Dr Kathryn Gutteridge,
Previous President of the Royal College of Midwives

To find out more or to help us raise our final £1million, visit bwh.org.uk/woodland-house.



Fight For All The Feels Campaign

As many as one in six young people between the ages of 16 and 24-years-old have experienced a mental health issue. And the anxieties of a global pandemic mean that it's even tougher to deal with an uncertain and changing world.

As a direct response, on World Mental Health Day in October 2020, we launched a campaign in aid of Forward Thinking Birmingham – our Trust's unique mental health service for children, young people and young adults (aged 0-25-years-old) – called Fight For All The Feels to tackle our city's growing youth mental health challenge and the stigma which still surrounds it.

Money raised from the campaign will fund a new youth mental health model of care, delivered by Peer Support Workers.

Once appointed, the Peer Support Workers will be the first of their kind within Children's and Adolescent Mental Health Services (CAMHS) in the UK.

Last year, a total of £400,000 was raised and pledged to establish the programme. The ultimate ambition is to raise £1.8million to support 20 whole time equivalent Peer Support Workers and a team leader fully-funded for three years.

Through its successful implementation, we intend to demonstrate the effectiveness and benefit of Peer Support Workers to the existing clinical model, so these roles become the norm and are rolled out as a blueprint for the rest of the UK.

Let's end the stigma around mental health together and show the next generation we're standing in their corner. Visit fightforallthefeels.org/donate.



Critical Journeys Appeal Achieved

Critically-ill babies and children in the West Midlands will now receive faster and more effective care, after we reached the £2million fundraising target for our Critical Journeys Appeal at the beginning of 2020.

The appeal was launched in 2017 to enable the Kids Intensive Care and Decision Support Service and Neonatal Transfer Service (KIDS/NTS), to respond faster and more effectively, helping seriously sick kids get to the right place, at the right time, for the right treatment. Money raised through the appeal has funded state-of-the-art equipment for a fleet of Critical Care Ambulances – run by St John Ambulance – which are stationed at our Children's Hospital.

The appeal removed the need to share equipment between ambulances, and will ensure the KIDS/NTS service can respond to simultaneous demands and improve response times. This will ultimately result in better care and outcomes for critically-ill babies and children and most importantly, help to save more lives.

Furthermore, the money will enable the KIDS/NTS service to continue to deliver specialist care with compassion, by providing parents and children with added comforts such as phone chargers, snacks, teddy bears and DVDs as a welcome distraction in their time of need.

A massive thank you to everyone who donated to this much-needed appeal.



Continue Making a Difference

We're forever grateful for your support, and there's a million and one ways you can help us continue to make a difference to the work of our hospitals. Here's just a few examples of how you could go that extra mile for our women, babies, children and families.

Make a Donation

Whether you're able to give £5, £500 or £5,000, a single donation or a regular, monthly gift allows us to support our patients and families where it's needed the most. Find out more at bwh.org.uk/donate or bch.org.uk/donate.

Leave a Gift in Your Will

Help us write the story for future generations by leaving us a gift in your will. You will be joining visionary supporters who have been writing our hospitals into their wills for almost 160 years. To help us better the care for generations to come, visit bwh.org.uk/gifts-in-wills or bch.org.uk/gifts-in-wills.

Sign Up to an Event

Whether you fancy taking on a 100-mile bike ride, running a marathon or climbing a mountain, we have an event for you.

We offer a number of charity places for some of the best events across the UK, or you can sign up to one of your own. Find the perfect challenge for you at bwh.org.uk/events or bch.org.uk/events.

Register for Payroll Giving

Payroll Giving is a smart, simple and tax-effective way to give straight from your pay cheque every month. By signing up to Payroll Giving, you can make every payday even better by knowing your payslip is helping support our fantastic hospitals. Get in touch using the contact details below to find out more.

Whether you're an individual looking to raise money for us, a business who has chosen our Women's Hospital as its charity of the year, or a trust who wants to support a specific project at our Children's Hospital, we are just a phone call or an email away from beginning your charitable journey.

Our offices are open between 9am and 5pm, Monday to Friday. To find out about all the ways you can get involved, speak to our team using the following numbers and email addresses:

Birmingham Women's Hospital Charity:

☎ 0121 335 8040
✉ bwc.fundraising@nhs.net
🌐 bwh.org.uk

Birmingham Children's Hospital Charity:

☎ 0121 333 8506
✉ fundraising@bch.org.uk
🌐 bch.org.uk





Photo taken prior to outbreak of COVID-19

Our Donors and Supporters

It is with grateful thanks to all of our supporters, donors and fundraisers that we have been able to achieve everything we have in the last financial year. On these pages we have listed those of you who have gone above and beyond, raising over £5,000 for our charities, but we extend an enormous amount of gratitude to everyone who has donated anything at all to support our fantastic hospitals.

Thank you.

- The 29th May 1961 Charitable Trust
- Baron Davenport's Charity
- Bernard Piggott Trust
- Mr S Brar
- Burdett Trust for Nursing
- Carter the Brave
- Mrs C Channa
- Charities Trust
- Children with Cancer UK
- Mr and Mrs S Cleaver
- The Cliff Richard Fan Club of Birmingham
- Clive and Sylvia Richards Charity
- Clothes Aid
- Collection4Clothes
- Countryside Properties
- Mr S Davies
- DPD Local Smethwick
- The Edward Cadbury Charitable Trust
- The Edward and Dorothy Cadbury Trust
- The Entertainer and The Pennies Foundation
- The Eveson Charitable Trust
- Gallagher
- Genting Casinos UK Ltd
- Mr C Gibbs
- Friends and Family of Briya Gill
- Give a Child Health

- The Grimmitt Trust
- Gymshark
- Hamstead Law Practice
- The Hobson Charity
- HomeServe Membership Ltd
- HSBC Birmingham Branches
- Integra LifeSciences
- Kwik-Fit
- Libby Mae's Little Angels
- The Loppylugs and Barbara Morrison Charitable Trust
- MGA Entertainment
- M K a Difference
- The M K Rose Charitable Trust
- Marsh Industries
- Masonic Charitable Foundation
- Morrisons
- Mowgli Street Food
- Dr M Nash
- National Grid ESO
- NCF Living
- NFU Mutual Tamworth
- NHS Charities Together
- James Perks
- Steve Plant
- Mr A Powell

- The R V J Cadbury Charitable Trust
- The Saintbury Charitable Trust
- Mr I Sanghera
- Mr G Sewell
- SDL Property Management
- Sigma Financial
- Friends and Family of Remy Smith
- Sporting Bears Motor Club
- Sri Dasmesh Sikh Temple
- The Steve Bull Foundation
- The Thompson Family Charitable Trust
- Tommies Childcare
- Friends and Family of Leo Warder
- West Bromwich Building Society
- William A Cadbury Charitable Trust
- The Woods Family
- And a number of anonymous donors

We would also like to thank the following visionary supporters who left us a gift in their will in 2020:

- James Carter
- Janet Mary Cooper
- Valerie Ann Forbes
- Sheila Mary Gloster
- Arthur Leslie Hammond
- Estella Jacqueline Hindley
- Barbara Elizabeth Jones
- Robert Lappage
- Kenneth Lewis
- Jean McKenzie
- Joyce Audrey Mitchell
- Jean Morrison
- Lily Panting
- Margaret Parkes
- John Phillips
- Barbara Spragg
- Derek Torr
- Georgina Varley
- Harold Watson
- Florence Evelyn Wheeler
- Kathleen Wilkinson
- Mrs Williamson



Photo taken prior to outbreak of COVID-19

Birmingham Women's and Children's Hospital Charity
5 Rowchester Court, Whittall Street, Birmingham, B4 6DH
A registered charity in England and Wales

Registered Charity Number 1160875

